

TG76000 Series

Touch current tester\Protect conductor current tester\Leakage current tester



Product Feature:

- ▲ In full compliance with the IEC60990-1999 L.1- L.6 test requirements
- ▲ Visual operation interface, the fool type operation process, stick out a mile.
- ▲ Touch + USB mouse dual-mode operation, simple and quick
- ▲ 256 color TFT color LCD display, fresh and bright
- ▲ 7 groups of standard body measurement network + protective conductor current network + open-circuit Voltmeter
- ▲ 3 kinds of work modes for measuring Touch Current
- ▲ Frequency range from DC to 1MHz
- ▲ True effective value of RMS, DC, PEAK shows at the same time
- ▲ EUT working voltage, current, power shows at the same time
- ▲ Setting the high/lower limit alarm function
- ▲ Can save the test results
- ▲ Multifunctional EUT socket, compatible with a variety of testing plug
- ▲ Built-in isolation transformer, construction clean test environment

TG76000 series touch current tester is used to meet the four kinds of safety test (Withstand voltage test, insulation resistance test, Grounding resistance test, Touch current test) of safety testing requirements. Is currently the only meet IEC60990-1999 of 《Methods of measurement of touch current and protective conductor current》 Digital precision instrument, test areas include general electrical and electronic equipment and medical testing equipment. Apply audio/video products(IEC60065) information products, (IEC60950-1), household appliances(IEC60335-1), lamps (IEC60598.1), Medical equipment (IEC60601-1) and similar electronic equipment - Safety requirements Touch current portion.

Hardware	ADI
OEM	Tyco Electronics



TG76000 Series

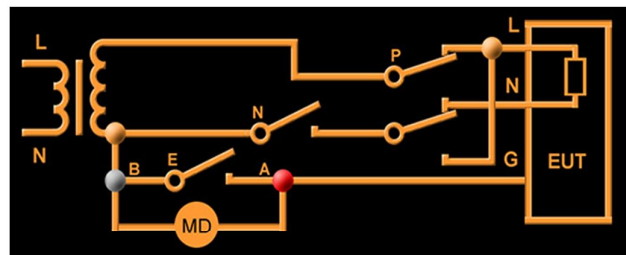
Touch current tester\Protect conductor current tester\Leakage current tester

model	standards	category	config..	Component
TG76335	IEC60335.1 IEC60950	appliances/information equipmen	Fig4 (U2)	(1.5kΩ//0.22uF) +500Ω// (10kΩ+0.022uF)
			Protective conductor current	0.5Ω
TG76065	IEC60065	Audio/video equipment	Fig3 (U1)	(1.5kΩ//0.22uF) +500Ω
			Fig4 (U2)	(1.5kΩ//0.22uF) +500Ω// (10kΩ+0.022uF)
			1MΩVoltmeter	1MΩ
TG76598	IEC60598.1	Lamps equipment	Fig4 (U2)	(1.5kΩ//0.22uF) +500Ω// (10kΩ+0.022uF)
			Fig5 (U3)	(1.5kΩ//0.22uF+500Ω// (10kΩ+ (20kΩ+6.2nF) //9.1nF)
			Protective conductor current	150Ω//1.5 uF
TG76745	IEC60745.1	Electric tools equipment	Fig4 (U2)	(1.5kΩ//0.22uF) +500Ω// (10kΩ+0.022uF)
TG76000	IEC60335.1 IEC60950 IEC60065 IEC60598.1 IEC60745.1	appliances information Audio/video Lamps Electric tools equipment	Fig3 (U1)	(1.5kΩ//0.22uF) +500Ω
			Fig4 (U2)	(1.5kΩ//0.22uF) +500Ω// (10kΩ+0.022uF)
			Fig5 (U3)	(1.5kΩ//0.22uF+500Ω// (10kΩ+ (20kΩ+6.2nF) //9.1nF)
			1MΩVoltmeter	1MΩ
			Protective conductor current	0.5Ω
			Protective conductor current	150Ω//1.5 uF
			Medical special(U)	1kΩ// (10KΩ+0.015uF)
TG76010	IEC61010.1	Measurement control and laboratory equipment	Fig3(U1)	(1.5kΩ//0.22uF) +500Ω
			Fig4 (U2)	(1.5kΩ//0.22uF) +500Ω// (10kΩ+0.022uF)
			U1_375Ω	(375Ω//0.22uF) +500Ω
			U_2KΩ	2KΩ
			1MΩVoltmeter	1MΩ
			50KΩVoltmeter	50KΩ
Customized	According to the standard to add networks			
Accuracy	Resistance: ±0.1%, Capacitor: ±1%, Other ±1%			

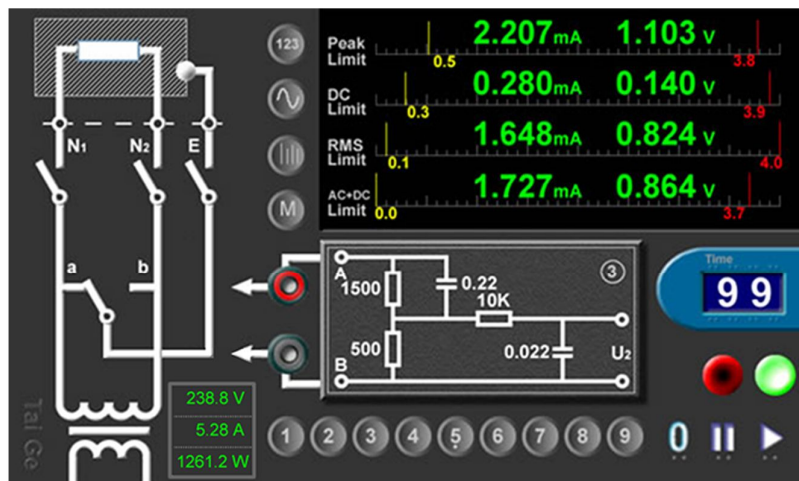
Description: Simple and intuitive man-machine interface

Human body measurement network selection, Test time setting, Power supply system configuration, Test probe setting, The touch pen click gently, doesn't need to remember anything , simple and clear, easy to get.

Display the results: DC/PEAK/RMS/AC+DC/The voltage and current shows out at the same time,High and low limit alarm line setting,Display the waveform(optional),Peak automatically capture,; The DC component display,RMS data display,AC+DC data display.



Input	
Voltage	AC 115V~230V ±10%
Frequency	50Hz/60Hz
Fuse	5A
EUT supply	
Vol.. input	AC 50V~230V ±10%
Current output	0~7A (220V:242V)
	Optional: 10A、20A
Power output	1500VA(Basic Config..)
	Optional: 2500VA
Fuse	10A
Transformer	Transformer ratio: 1:1.1 distortion : 0.1%



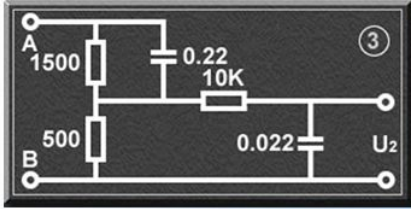
EUT power monitoring		Voltage		Current		Power		
Range		AC 50V~250V		AC 0A-20A		0~2500W		
Resolution		0.1V		10mA		0.1W		
Measurement Item		TC		Touch current (leakage current)				
		FCC		Protective conductor current				
		METER		External voltage meter				
Measurement kinds		Surface to Surface		(PH-PL)				
		Surface to Line		(PH-L)				
		Ground to Line		(G-L)				
		Ground to Neutral		(G-N)				
Measuring network:		1	2	3	4	6	5	
		1MΩ	U1	U2	U3	U	0.5Ω	
Voltage range	PEAK	-120V~+120V	-70V ~ +70V	-4V ~ +4V		-10V ~ +10V		
	DC	-120V~+120V	-70V ~ +70V	-4V ~ +4V		-10V ~ +10V		
Current range	PEAK		-140mA~+140mA	-8mA~+8mA		-10mA~+10mA		
	DC		-140mA~+140mA	-8mA~+8mA		-10mA~+10mA		
Resolution		0.1V	10 uA	0.1uA		0.1mA		
Accuracy		DC	± (2.0% of reading+5uA)				0Hz<f<100kHz: ±(2.0% of reading+0.1mA) 100kHz≤f≤400kHz: ±(5.0% of reading+0.1mA)	
		RMS	15Hz<f<200kHz :± (2.0% of reading+5uA)					
			200kHz≤f≤1MHz: ±(5.0% of reading+8uA)					
		PEAK	15Hz<f<200kHz :± (2.0% of reading+5uA)					
200kHz≤f≤1MHz: ±(5.0% of reading+8uA)								
Frequency range		DC, 15Hz≤f≤1MHz				0Hz≤f≤400kHz		
Input impedance		1MΩ						
Input capacitance		<30pF						
Common mode rejection ratio		CMRR > 40db						
Signal input		Isolation floating measurements						
Environment		Storage temperature range: -20℃ to +70℃ (-4°F to +158°F)						
		Operating temperature range: 0℃ to +40℃ (+32°F to +104°F)						
AB Probe		Rated voltage: AC<250V						
		Rated current: PEAK<500 mA,DC<500 mA						
Insulation resistance		>30MΩ(500Vdc) (between AC line and chassis)						
Withstand voltage		1500Vac,3S/20mA or less (between AC line and chassis)						
Earth continuity		20Aac/0.1Ω or less						
Dimension		470mm*450mm*150						
Weight		16Kg						



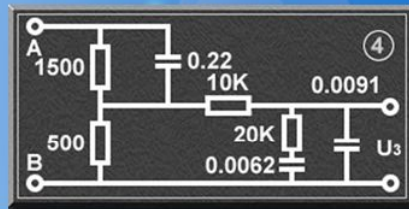
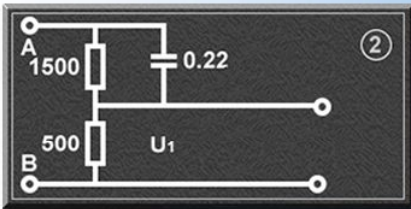
TG76000 Series

Touch current tester | Protect conductor current tester | Leakage current tester

According to IEC60990 measurement method and Simulation of human network, suitable for testing equipment standards:

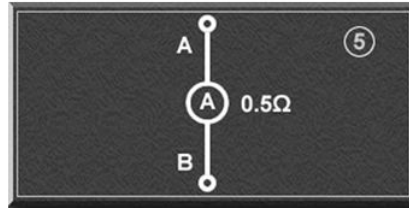
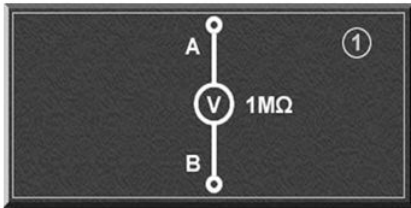


IEC60065: Audio, video electronic apparatus
 IEC60598.1: Luminaires apparatus
 IEC60335.1: Household electrical appliances
 IEC60950: Communication electrical apparatus
 IEC60475.1: Motor-operated electric tools
 IEC61010.1 Measurement/Control and Lab appliances



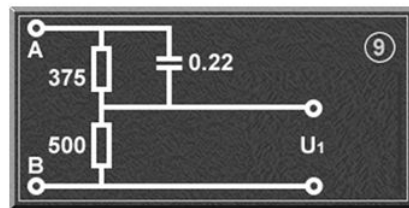
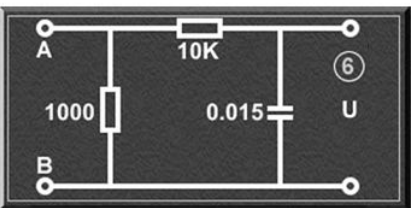
IEC60065:
 Audio, video electronic apparatus
 IEC61010.1:
 Measurement/Control and Lab appliances

IEC60598.1:
 Luminaires apparatus



IEC60065:
 Audio, video electronic apparatus
 IEC61010.1:
 Measurement/Control and Lab appliances

IEC60335.1 :
 Household electrical appliances
 IEC60950:
 Communication electrical apparatus



IEC60601.1:
 Medical electrical equipment Part One

IEC61010.1:
 Measurement/Control and Lab appliances

The apparatus is suitable for sine wave touch current test, also applies to produce high frequency complex products non sine wave touch current test. TG76000 series have different configuration . You can choose different simulation human body measuring network and different power supply scheme. Please contact technical supports center for details: